



STAINLESS STEEL

TOILET PARTITIONS

hadrian®



#4 BRUSHED HYBRID & EMBOSSED

MARKET COST INDEX: \$ \$\$\$

FIRE RATING: C (GOOD) B (BETTER) A (BEST)

RECYCLED CONTENT: 76% post-consumer / 15% pre-consumer

Stainless Steel

BEAUTIFUL AND LONG LASTING

A NATURAL CHOICE FOR ENVIRONMENTALLY SENSITIVE PROJECTS

Made from minerals of the earth, stainless steel is natural. It is non-toxic and 100% recyclable.



Hadrian's stainless steel toilet partitions have an outstanding recycled content of 91% (76% post-consumer and 15% pre-consumer), making them an excellent choice for LEED and other environmentally sensitive projects. Stainless steel allows you to "build green" without compromising on appearance or performance.

INDUSTRY-BEST FIRE RESISTANCE

Hadrian's stainless steel toilet partitions are completely fireproof and will not give off toxic smoke if exposed to heat or flame. Fire resistance is a critical requirement of most building codes and no other product performs better.

COST EFFECTIVE

Less expensive than composite and phenolic type toilet partitions, stainless steel is a very cost effective option. Stainless steel achieves an upscale look and outstanding performance at an affordable price point.



JP MORGAN CHASE - NEW YORK, NEW YORK, USA
164 CEILING HUNG ELITE STAINLESS STEEL TOILET PARTITIONS

© DAVID GUIJA/EMPORIS

CORROSION RESISTANT

IMPACT RESISTANT

EASY TO CLEAN

Finishes

The long lasting beauty and gleaming modern appearance of Hadrian's stainless steel toilet partitions lend a touch of class to any washroom environment.

#4 BRUSHED STAINLESS STEEL

Hadrian's type 304, #4 brushed stainless steel promotes a hygienic environment while offering excellent corrosion resistance and a clean, modern appearance.

EMBOSSSED STAINLESS STEEL

The unique textured pattern of embossed stainless steel offers added protection against abrasions, smudges and fingerprints.

HYBRID STAINLESS STEEL – BRINGING BOTH FINISHES TOGETHER

Hybrid stainless steel compartments feature an embossed interior for increased protection against vandalism and a #4 brushed finish on the exterior to maintain a clean, smooth appearance on the outside.

Special finishes (such as leather-grain) are available upon request. Minimum quantities may apply.

DURABLE

H Y G I E N I C

Styles

Hadrian's stainless steel toilet partitions are available in all configurations:



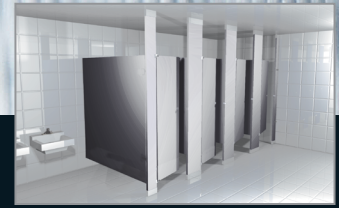
HEADRAIL BRACED



CEILING HUNG



FLOOR MOUNTED



FLOOR TO CEILING

STANDARD SERIES

Hadrian's standard series features 58" (1473mm) high doors and panels, which are mounted 12" (305mm) off the finished floor.

ELITE SERIES

Hadrian's Elite Series offers increased privacy with 64" (1626mm) high doors and panels, mounted just 6" (152mm) or 9" (229mm) from the finished floor. Continuous channels eliminate all sightline gaps.

ELITE PLUS SYSTEM

Taking the Elite concept a step further, Hadrian's Elite Plus System affords additional privacy with 72" (1829mm) high doors and panels, mounted just 6" (152mm) or 9" (229mm) from the finished floor. Continuous channels eliminate all sightline gaps.

ELITE MAX SYSTEM

Elite Max offers maximum privacy with up to 92" (2337mm) high doors and panels – available in 1" (25mm) increments between 73" (1854mm) and 92" (2337mm), and mounted 4" (102mm), 6" (152mm) or 9" (229mm) from the floor. Indicator latches come standard and optional pedestal mounting is available for easy cleaning and an upscale appearance. Continuous channels eliminate all sightline gaps.

The Ultimate in Privacy

HADRIAN'S NO-SIGHTLINE SOLUTION

Available in a brushed aluminum finish to complement the look of stainless steel, Hadrian's No-Sightline Solution maximizes privacy by completely eliminating all sightline gaps around the door.



Hardware



STAINLESS STEEL BRACKETS

Hadrian's #4 brush finished stamped stainless steel brackets extend the look and performance of stainless steel to the details of the installation.



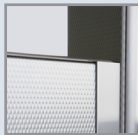
STAINLESS STEEL WRAP-AROUND HINGES

#4 brushed stainless steel wrap-around hinges offer durability and flawless performance.



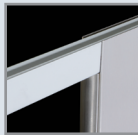
CONTINUOUS HINGE

Hadrian's 16-gauge continuous stainless steel hinge matches the finish of stainless steel partitions while covering the full height of the door. Featuring a stainless steel hinge pin, this heavy-duty option also obstructs the sightline on the hinge side of the door.



CONTINUOUS CHANNELS

Full height continuous stainless steel channels are available for all panel to pilaster, panel to wall and pilaster to wall connections. The full height channels match the finish of stainless steel partitions while also eliminating sightline gaps.



ANTI-GRIP HEADRAIL

Available in a standard anodized finish (shown) or brush finish to complement the look of stainless steel, Hadrian's double-ridge, anti-grip headrail design deters boisterous activity and consequent damage, while still offering a smooth track for shower curtain hooks.



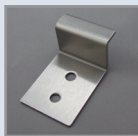
BARRIER-FREE LEVER LATCH

Hadrian's exclusive thumbturn lever conforms to American Disability Act and Canadian barrier-free requirements. It can be activated with a short, easy movement and without finger-grip application.



SHOES

Pilaster shoes are available in #4 brushed stainless steel finish.



COAT HOOK

Hadrian offers a flat coat hook with a #4 brushed finish.



FASTENERS

Available in chrome or stainless steel, fasteners are theft-proof 6-lobe security head screws to deter vandalism.

Standard chrome hardware is also available for stainless steel toilet partitions.

hadrian®

Hadrian prides itself on being a professional and friendly company that is easy to deal with. We make it a priority to spend time getting to know our customers and work with them to meet the challenges of their specific market. Our local representatives ensure Architect, Interior Designer, Specification Writer, Government Planner, School Official and End-User sales coverage while also expeditiously addressing field support needs and jobsite concerns.

Form No. 300-011, 2/23 | Patent zurn.com/patents
US 1.440.942.9118 CANADA 1.905.333.0300
HADRIAN-INC.COM

by **zurn ELKAY** Water Solutions