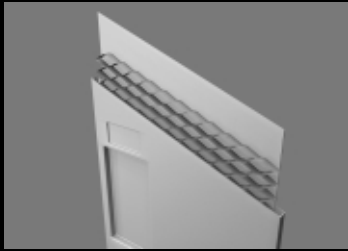


LOCKERS



Door
Construction



Pull Detail



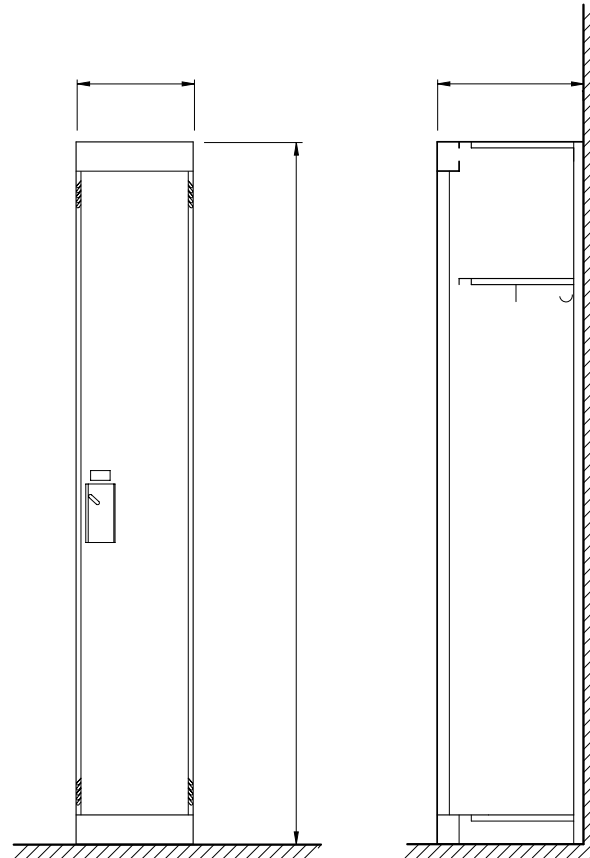
Ventilation

E m p e r o r
corridor lockers

hadrian
toilet partitions and lockers

www.hadrian-inc.com

Technical Data



Locker Doors

- Standard Doors
20 gauge outer panel /
24 gauge inner panel
- Heavy Duty Doors
16 gauge outer panel /
24 gauge inner panel

1" (25mm) cell honeycomb core

Lock Preparation

- Padlock Preparation
- Built-in Combination /
Cylinder Keylock Preparation
- Positive Latch

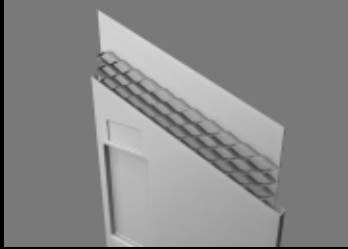
Locker Parts

| | |
|---------------------|------|
| Back Panel | 24ga |
| Side Panel | 24ga |
| Top, Bottom & Shelf | 22ga |
| Door Strike (Frame) | 16ga |
| Hasp | 11ga |
| Hinge (Continuous) | 18ga |

Note: Locker growth 1/32"
(0.8mm) per locker

Emperor - Single Tier

LOCKERS



Door Construction



Pull Detail



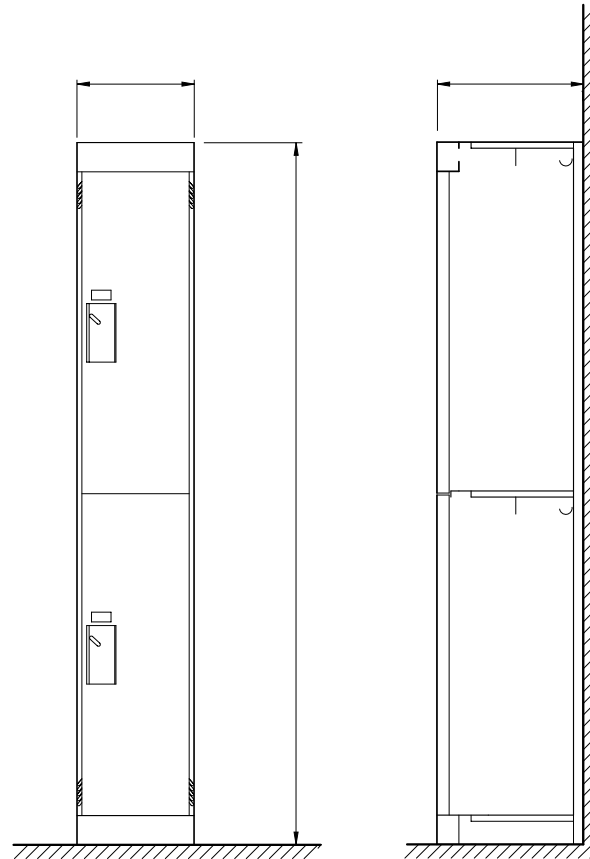
Ventilation

Emperor
corridor lockers

hadrian
toilet partitions and lockers

www.hadrian-inc.com

Technical Data



Locker Doors

- Standard Doors
20 gauge outer panel /
24 gauge inner panel
- Heavy Duty Doors
16 gauge outer panel /
24 gauge inner panel

1" (25mm) cell honeycomb core

Lock Preparation

- Padlock Preparation
- Built-in Combination /
Cylinder Keylock Preparation
- Positive Latch

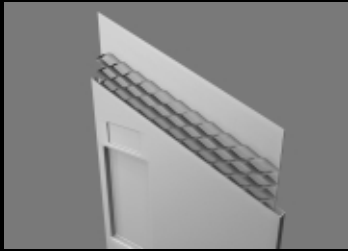
Locker Parts

| | |
|---------------------|------|
| Back Panel | 24ga |
| Side Panel | 24ga |
| Top, Bottom & Shelf | 22ga |
| Door Strike (Frame) | 16ga |
| Hasp | 11ga |
| Hinge (Continuous) | 18ga |

Note: Locker growth 1/32"
(0.8mm) per locker

Emperor - Two Tier

LOCKERS



Door
Construction



Pull Detail



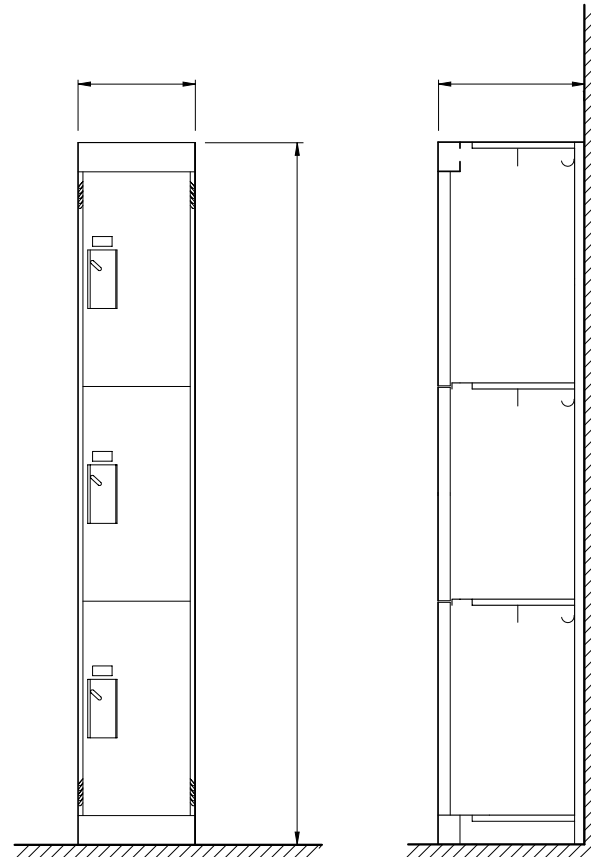
Ventilation

E m p e r o r
corridor lockers

hadrian
toilet partitions and lockers

www.hadrian-inc.com

Technical Data



Locker Doors

- Standard Doors
20 gauge outer panel /
24 gauge inner panel
- Heavy Duty Doors
16 gauge outer panel /
24 gauge inner panel

1" (25mm) cell honeycomb core

Lock Preparation

- Padlock Preparation
- Built-in Combination /
Cylinder Keylock Preparation
- Positive Latch

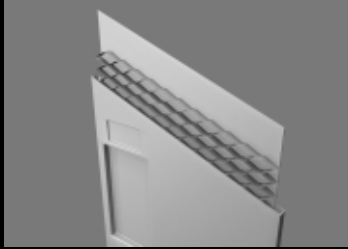
Locker Parts

| | |
|---------------------|------|
| Back Panel | 24ga |
| Side Panel | 24ga |
| Top, Bottom & Shelf | 22ga |
| Door Strike (Frame) | 16ga |
| Hasp | 11ga |
| Hinge (Continuous) | 18ga |

Note: Locker growth 1/32"
(0.8mm) per locker

Emperor - Three Tier

LOCKERS



Door Construction



Pull Detail



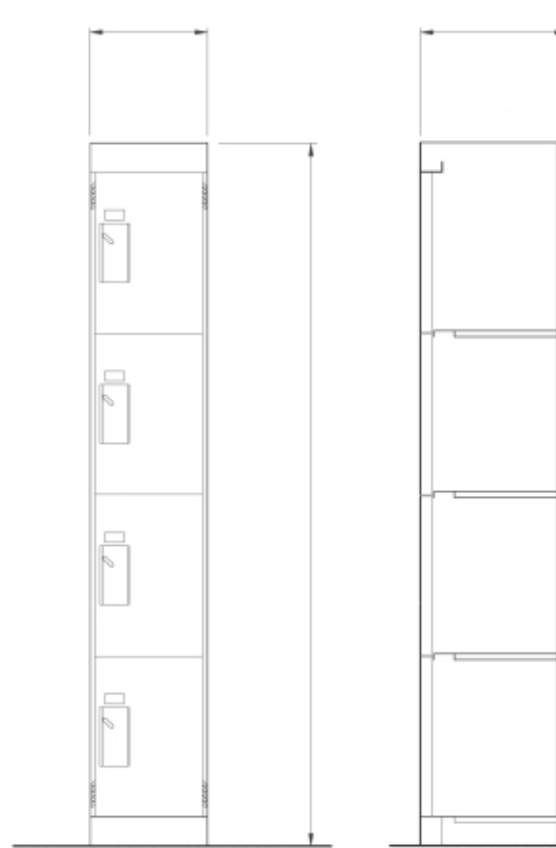
Ventilation

Emperor
corridor lockers

hadrian
toilet partitions and lockers

www.hadrian-inc.com

Technical Data



Locker Doors

- Standard Doors
20 gauge outer panel /
24 gauge inner panel
- Heavy Duty Doors
16 gauge outer panel /
24 gauge inner panel

1" (25mm) cell honeycomb core

Lock Preparation

- Padlock Preparation
- Built-in Combination /
Cylinder Keylock Preparation
- Positive Latch

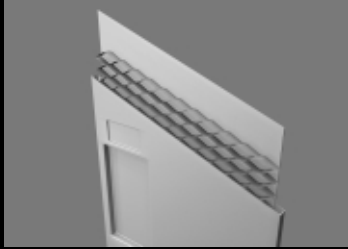
Locker Parts

| | |
|---------------------|------|
| Back Panel | 24ga |
| Side Panel | 24ga |
| Top, Bottom & Shelf | 22ga |
| Door Strike (Frame) | 16ga |
| Hasp | 11ga |
| Hinge (Continuous) | 18ga |

Note: Locker growth 1/32"
(0.8mm) per locker

Emperor - Four Tier

LOCKERS



Door Construction



Pull Detail



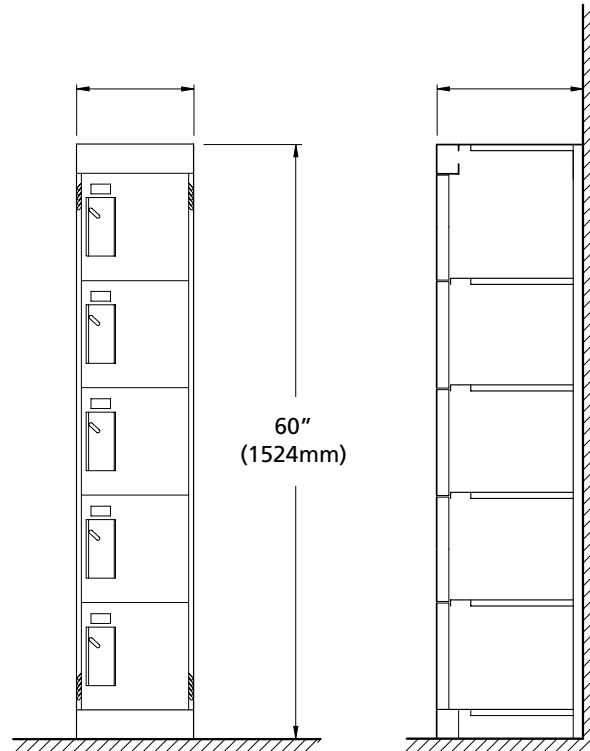
Ventilation

Emperor
corridor lockers

hadrian
toilet partitions and lockers

www.hadrian-inc.com

Technical Data



Note: Five Tier Emperor lockers available in 60" (1524mm) height only.

Locker Doors

- Standard Doors
20 gauge outer panel /
24 gauge inner panel

1" (25mm) cell honeycomb core

Lock Preparation

- Padlock Preparation
- Built-in Combination /
Cylinder Keylock Preparation

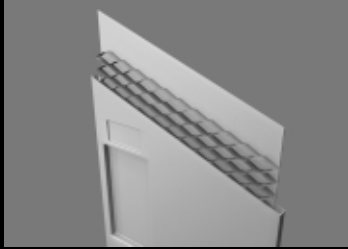
Locker Parts

| | |
|---------------------|------|
| Back Panel | 24ga |
| Side Panel | 24ga |
| Top, Bottom & Shelf | 22ga |
| Door Strike (Frame) | 16ga |
| Hasp | 11ga |
| Hinge (Continuous) | 18ga |

Note: Locker growth 1/32"
(0.8mm) per locker

Emperor - Five Tier

LOCKERS



Door Construction



Pull Detail



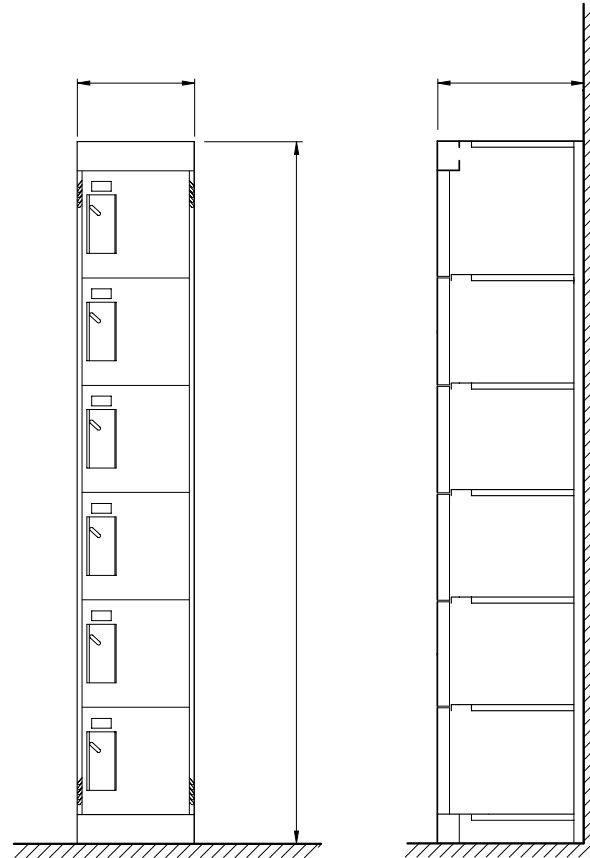
Ventilation

E m p e r o r
corridor lockers

hadrian
toilet partitions and lockers

www.hadrian-inc.com

Technical Data



Locker Doors

- Standard Doors
20 gauge outer panel /
24 gauge inner panel

1" (25mm) cell honeycomb core

Lock Preparation

- Padlock Preparation
- Built-in Combination /
Cylinder Keylock Preparation

Locker Parts

| | |
|---------------------|------|
| Back Panel | 24ga |
| Side Panel | 24ga |
| Top, Bottom & Shelf | 22ga |
| Door Strike (Frame) | 16ga |
| Hasp | 11ga |
| Hinge (Continuous) | 18ga |

Note: Locker growth 1/32"
(0.8mm) per locker

Emperor - Six Tier