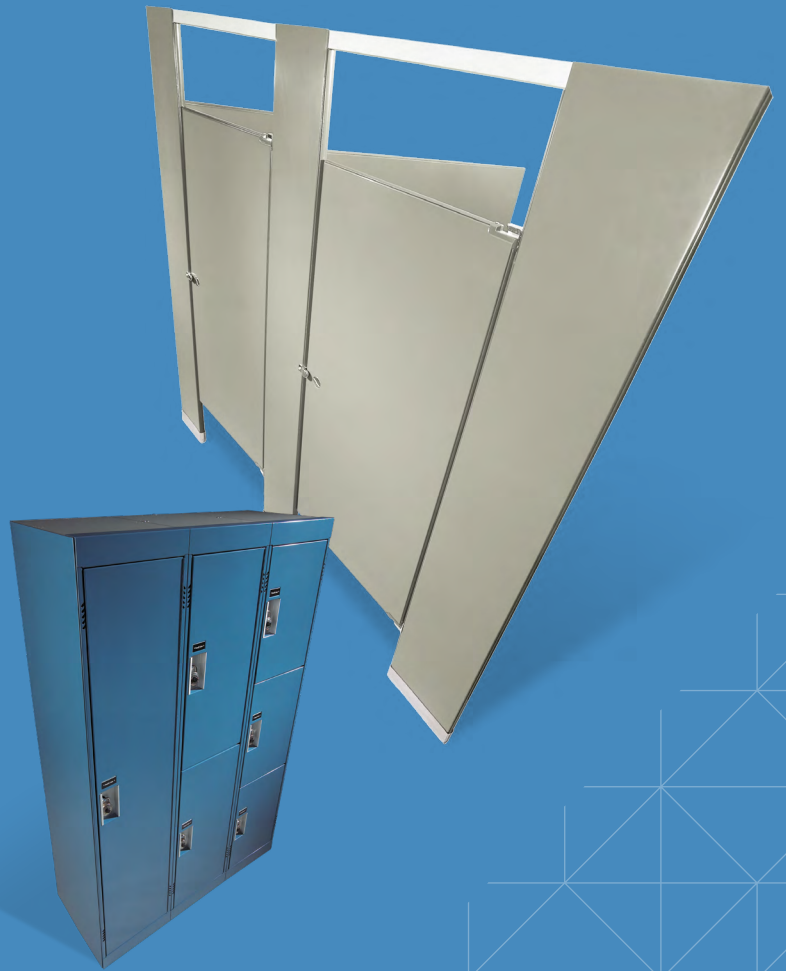


Powder Coated Color Card

- Fast, reliable lead times
- Industry-best fire resistance
- High recycled content
- Anti-graffiti finishes



Powder Coated Color Card

Hadrian has taken great care to ensure that these color swatches are the closest possible representations of Hadrian finishes. Colors, textures and gloss levels may vary.

SOLID COLORS

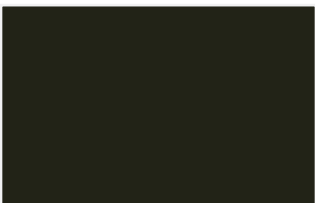
			
535 LIGHT GREY   	541 EXTRA WHITE	603 ALMOND  	607 BORDEAUX
			
621 SLATE 	504 LINEN  	532 LATTE 	576 RUBY RED
			
545 CHARCOAL 	500 WHITE	585 SAHARA	581 MOSS GREEN
			 Headrail braced toilet partitions available for Premium Quick Ship in USA; subject to upcharge.  Headrail braced, ceiling hung (for 9 ft ceilings and lower) and floor mounted toilet partitions available for Quick Ship in USA.  Headrail braced toilet partitions available for Quick Ship in Canada.
510 BLACK 	639 SAPPHIRE BLUE	609 COLONIAL BLUE 	

ANTI-GRAFFITI COLORS (SUBJECT TO UPCHARGE)

			
833 TRICORN BLACK SUBJECT TO UPCHARGE	828 DOVETAIL SUBJECT TO UPCHARGE	829 DESERT SUBJECT TO UPCHARGE	826 KILIM BEIGE SUBJECT TO UPCHARGE

Proven ASTM D6578 Graffiti Resistance to easily remove:
 • Permanent Marker • Lipstick • Water Based Ink Marker • Wax Crayon • Spray Paint

SPECIAL EFFECTS COLORS (SUBJECT TO UPCHARGE)

			STAINLESS STEEL TOILET PARTITIONS Headrail braced type 304, #4 brushed stainless steel (including Elite 6 and 9-inch AFF) toilet partitions are available for Quick Ship and Premium Quick Ship in USA; upcharge applies. Lockers are not available in stainless steel. CUSTOM COLORS For custom colors, a minimum of 20 units for toilet partitions and 100 units for lockers is required per color. Custom colors are subject to upcharge.
837 BLACK FOX SUBJECT TO UPCHARGE	831 NICKEL METALLIC SUBJECT TO UPCHARGE	814 CAST IRON METALLIC SUBJECT TO UPCHARGE	